

**CT DEEP** **2017**  
**FISHING REPORT NUMBER 21**  
**8/31/2017**



Brown Trout (*Salmo trutta*)



YOU CAN FIND US DIRECTLY ON FACEBOOK. This page features a variety of information on fishing, hunting, and wildlife watching in Connecticut. The address is [www.facebook.com/CTFishandWildlife](http://www.facebook.com/CTFishandWildlife).

**SHARE THE EXPERIENCE**  
Take someone fishing

## INLAND REPORT

**Fall TROUT Stocking-** Trout were stocked into the **Housatonic River TMA** (Sharon to Cornwall) and into the **Farmington River** (New Hartford to Unionville) this week. More fall trout stocking will occur as conditions continue to be favorable for stocking. Stay up to date with our daily stocking post on [Facebook](#), our [interactive trout stocking map](#), and our [stocking report](#).

**LARGEMOUTH BASS** fishing is reported as very good. Places where the largemouth are eager to bite include West Hill Pond, East Twin Lake, Gardner Lake, Pickerel Lake, Beseck Lake, Amos Lake, Beach Pond, Highland Lake, Seymour Reservoir #4, Crystal Lake, Mudge Pond, West Side Pond, Tyler Lake, Mansfield Hollow Reservoir, Dog Pond, Hatch Pond, Park Pond, Lake Wononskopomuc, Lake Saltonstall, Bishop Swamp, Winchester Lake, Congamond Lakes, Quinebaug Lake, Black Pond (Meriden), Burr Pond, Griggs Pond, Anderson Pond, Billings Lake, Moodus Reservoir, Aspinook Pond, Babcock Pond, Pachaug Pond, Lake Hayward, Quonnipaug Lake, Rogers Lake and Stillwater Pond.

**Tournament angler** reports are from Gardner Lake (tough for most, not much size with the average fish weight just over 1 lb each and a 2.4 lb lunker), Long Pond (slow, 2.66 lb lunker), Mansfield Hollow Reservoir (slow to fair for two clubs, 4.19 lb and 4.13 lb lunkers), Pachaug Pond (slow to fair for one club, with a 3.71 lb lunker, but better action and size for a second club with fish averaging over 2 lbs apiece and a 5.24 lb lunker), Powers Lake (fair, no size with fish barely averaging a lb apiece and only a 1.68 lb lunker), Quaddick Lake (good fishing, good size with an average fish weight of 2.28 lbs each and a 5.15 lb lunker), Candlewood Lake (fair to good, 5.0 lb lunker), East Twin Lake (fair to good, 3.55 lb lunker), Lake Lillinonah (slow, but with a 5.72 lb lunker), and the Connecticut River (fair to good for one club, 4.31 lb lunker plus three more fish over 3.7 lbs, and a bit slower for a second club).

**SMALLMOUTH BASS.** Catches reported from Candlewood Lake, Housatonic River (Upper), Naugatuck River, Lake McDonough, Lake Zoar and Lake Lillinonah. Housatonic River smallmouth fishing has been

**CONNECTICUT DEPARTMENT OF ENERGY AND ENVIRONMENTAL PROTECTION**

**Connecticut Hunting & Fishing Day**

**Saturday September 23 10AM to 4PM**

- Hunting & Trapping Tips
- Fishing & Boating Displays
- Archery Shooting
- Fly-tying and Casting
- Hunting & Fishing Clubs
- Conservation Organizations
- Birds of Prey
- Kid's Activities
- Fish & Wildlife Exhibits
- Equipment Vendors
- Laser shot, Dart gun, Blow pipe
- BB Gun Shooting Range
- Hunting Dog Demonstrations

**- NEW LOCATION -**

In association with: **Cabela's** Admission and all activities are **FREE!**

475 East Hartford Blvd N.  
East Hartford, CT

Connecticut Department of Energy and Environmental Protection  
[www.ct.gov/deep/HuntFishDay](http://www.ct.gov/deep/HuntFishDay)  
860-424-3011: [deep.ctwildlife@ct.gov](mailto:deep.ctwildlife@ct.gov)

good. **Tournament angler** reports are from Gardner Lake (a few caught), Candlewood Lake (slow to fair, 4.18 lb lunker), East Twin Lake (a couple of fish, 2.86 lb lunker), Lake Lillinah (slow to fair), Pachaug Pond (a few in the bags), and the Connecticut river (fair, 3.9 lb lunker).

**CARP** fishing is good to very good in most locations. Favorites include; Batterson Park Pond, West Thompson Reservoir, Aspinook Pond, Lake Zoar, and the Connecticut River.

**KOKANEE SALMON** slow, with a few reports from East Twin Lake (early morning) and West Hill Pond (early night fishing with corn, south end).

**NORTHERN PIKE** slow last week with few reports (maybe everyone is fishing for bass?) Places to target these awesome fish include Bantam Lake, Lake Lillinah, Connecticut River, and Pachaug Pond.

**WALLEYE** few reports and fishing appears to be slow. Look for Walleye in the evening or early morning along steep drops in Mount Tom, Saugatuck Reservoir. Squantz Pond, Batterson Park Pond, Beach Pond, Cedar Lake, West Thompson Lake, Gardner Lake, or Mashapaug Lake.

**CATFISH** – are on the feed this time of year and fishing is good in Lower Bolton Lake, Lake Wintergreen, Silver Lake, and [Community Fishing Waters](#).

**PANFISH** consistently excellent. For some great summer time fun try shore fishing in shallow areas with a popper. Check out the “panfish” map in our new application “[CT is Fishy](#)” to find a new place to fish close to you.

**TROUT-LAKES & PONDS** – Most lakes remain poor to fair. Best bets are to hit the traditional deep cold lakes like; East Twin Lake, Beach Pond, Long Pond, West Hill Pond, Crystal Lake, or Highland Lake (second bay, 25-30 feet).

**TROUT- RIVERS & STREAMS.** Conditions for trout fishing remain good, especially for late August (cooler than normal water temperatures and normal or slightly below normal flow levels - *see stream flow graphic on page 3*). We encourage you to fish one of the many Wild Trout Management Areas. These waters harbor incredibly colorful fish year-round. Worth some time and effort. Check out the “Go Wild” map in our new application “[CT is Fishy](#)” to find a new place to fish close to you.

**Farmington River** – Fishing remains very good and forecast conditions should be really good this weekend following the addition of 1,400 stocked brown trout from New Hartford to Unionville (*a reminder that the fishing is catch and release in this section beginning on September 1*). The West Branch flows are clear, low to moderate and are very fishable (currently 177 CFS at Riverton, with the Still River at 13 CFS) and morning water temperatures ranging from the mid to upper 50’s °F below the dam to the mid 60’s °F through New Hartford. The forecast is calling for some rain on Sunday – this could change things a bit.

**Hatches/patterns** continue to be a mixed bag of a variety of patterns including Tricos (*Tricorythodes* #22-24 in the morning; started in the mid-section of the river), *Ephemerella needhami* (#22-26, early morning), Leadwing Coachman (*Isonychia bicolor*, #12-14, fast water, afternoon/evening), Blue Wing Olives (*Drunella* spp. & *Baetis* spp.; #18, 22-24, mid-late afternoon), Caddis (tan #16-20, all day; green

**SAVE THE DATE**  
**Connecticut Hunting & Fishing Day**

**Saturday, September 23, 2017.**

**10 am-4 pm**

**CABELA’s, East Hartford**

Get all of the details at

[www.ct.gov/deep/huntfishday](http://www.ct.gov/deep/huntfishday)

#22-26, evening; summer pupa #18-20 morning), Cahills/Summer (*Stenonema ithaca*, #12-14, early morning), Midges (#22-28, morning), Black Ants (#12-18, mi day in fast water), Black Beetles (#16-18, midday), Stone Hopper (#8-12, mid-day).

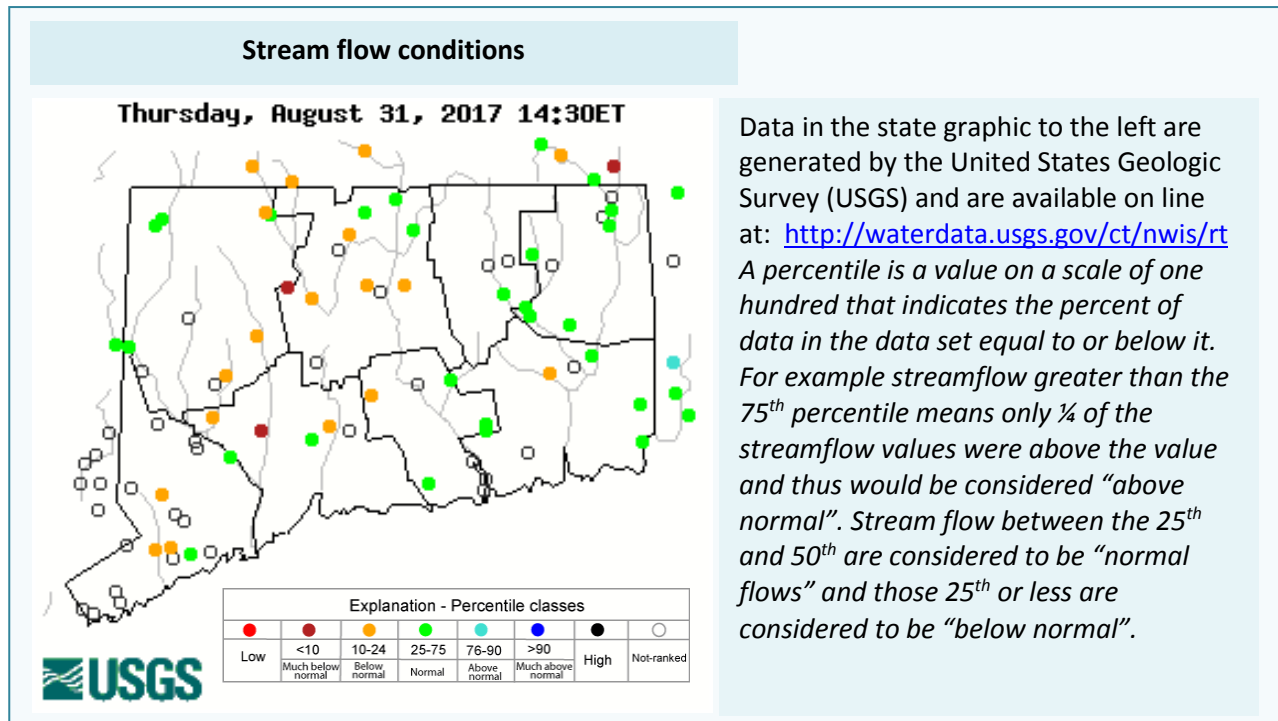
**Housatonic River** – Fishing has been very good and conditions for the weekend should be very good (depending upon how much rainfall we receive on Sunday) following recent stocking of 4,000 Brown Trout in the Trout Management Area (Sharon to Cornwall) and 500 Brown Trout into the Bull’s Bridge and Tenmile River TMA (Kent). Flows are very fishable (currently 216 CFS at Falls Village and 326 CFS at Gaylordsville), and are ideal for wading. Morning water temperatures continue in the upper 60’s to low 70’s°F. Can’t go wrong taking a few casts for **Smallmouth (Sharon to Kent), Pike (Bull’s Bridge Area), Fallfish (Sharon to Kent), and Carp (Sharon or Bull’s Bridge area)**.

**Hatches/patterns** include a few **White Fly** with good number of Black Caddis. There are a few Alder/Zebra Caddis (#8-10, Alder flies are very active during hot days), Sulphurs (#14-18, evening), Blue Wing Olive (#16-18, cloudy days, early morning; spinner fall in evening), Light Cahill (#12-14, evening), (*Isonychia bicolor*, #10-12 has been active lately, fast water, evening).

Streamer fishing and nymphing with big stoneflies is usually productive. Streamer patterns to try include White Zonkers, Wooly Buggers (#2-12), Muddlers, Lion Buggers, and Grey or Black Ghosts (#4-10). Light Cahill (#12-14, evening), *Isonychia* (#10-12), Sulfur (#16-18) and Black caddis (#14-18, early morning & evening). Don’t forget poppers and streamers (morning & evening).

**CONNECTICUT RIVER**

**LARGEMOUTH BASS** are very active throughout the river and in the coves. **SMALLMOUTH BASS** are offering some decent action in the upper river (Windsor & Enfield area). **CARP** are being caught in the upper and lower river on pre-baited ‘swims’. Anglers are finding some chunky **CATFISH** by night angling in the Hartford to Middletown stretch. Try from just north of Hartford on downstream, fish the outside bends (deep holes are producing as well, try cut bait).



**FACEBOOK FISH OF THE WEEK: POST YOUR CATCHES ON FB @CTFISHANDWILDLIFE**

A photo and [video link](#) of a nice smallmouth bass and a beautiful brown trout that were sampled as part of the Fisheries monitoring the population of bass and trout in the Housatonic River Trout Management Area (Cornwall to Sharon) on August 29. The Housatonic is fishing well and worth a trip.



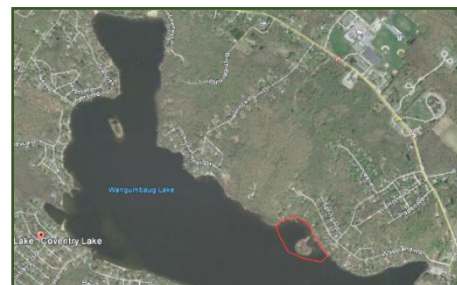


## NOTES & NOTICES:

**BASHAN LAKE.** A sailboat race is scheduled for Sunday, September 3 from 1:00 pm – 2:30 pm in the southeast half of the lake. Use extra caution in this area during the event.

**CONNECTICUT RIVER (invasive species alert).** Hydrilla was recently found in the main stem Connecticut River in Glastonbury (near Glastonbury’s Riverfront Park & Boathouse). See the Coventry Lake entry below for what river users should do to prevent spread of this invasive plant to other waterbodies.

**COVENTRY LAKE (invasive species alert).** Hydrilla, a very highly invasive aquatic plant, has been found growing in Coventry Lake. All lake users should take extra care to check and clean their boats (including canoes, kayaks and rowing sculls), trailers, and fishing equipment before leaving the boat launch, or leaving the lakeshore.



*Coventry Lake (Wangumbaug Lake) boaters should avoid the area outlined in red to avoid fragmenting and spreading hydrilla. This is only area in the lake where hydrilla has been found.*

**WEST BRANCH FARMINGTON RIVER (invasive species alert).** *Cymbella janischii* is a close relative of *Didymo* and has been introduced to the West Branch Farmington River (first noticed in 2011). *C. janischii* is native to the Pacific Northwest and not naturally found on the Eastern seaboard. Currently this type of “Rock Snot” is very abundant. The primary area of the river is from New Hartford upstream to Riverton. Note: *Didymo* is still present primarily in the West Branch above the Still River in Riverton. To help prevent the spread to other rivers and streams, all anglers should take extra care to clean and dry waders that have been in contact with rock snot. We recommend having a pair just for use only in the Farmington River.

**PHOTO CONTEST:** Do you have the next Angler’s Guide cover shot? Email us your high quality (high resolution) photos **by November 1** to [Deep.inland.fisheries@ct.gov](mailto:Deep.inland.fisheries@ct.gov) and include [photo contest](#) in the subject line.

**CT FISHIN’ TIPS** is our monthly e-newsletter dedicated to providing information, tips and pointers about fishing in Connecticut. Get CT Fishin’ Tips delivered automatically to your in box by subscribing at [www.ct.gov/deep/newslettersubscription](http://www.ct.gov/deep/newslettersubscription)

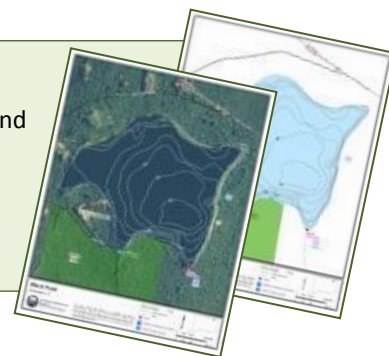
**NEW!** Youth Fishing Passport [Fishing Challenge Scorecard](#): Download the new scorecard for your Youth Fishing Passport Holder on the program web page at [www.ct.gov/deep/yfp](http://www.ct.gov/deep/yfp). Top anglers will receive a great prize pack of fishing gear.

### LAKE & POND BATHYMETRIC MAPS

Bathymetric maps of many of Connecticut’s public access lakes and ponds can be found online at:

[www.ct.gov/deep/lib/deep/fishing/general\\_information/lakebathymetrymaps.pdf](http://www.ct.gov/deep/lib/deep/fishing/general_information/lakebathymetrymaps.pdf)

Both plain line maps and maps overlaying an aerial photo available.



**"Connecticut is Fishy!"** a new interactive fishing resource for novice and expert alike. The link is on our main page at [www.ct.gov/deep/fishing](http://www.ct.gov/deep/fishing) or hit it directly at <http://ctdeep.maps.arcgis.com/apps/MapJournal/index.html>

We are fortunate that within a 60 minute drive you can be fly fishing the famed Housatonic or Farmington River, catching monster pike in Bantam Lake, jumbo carp from the Connecticut River, or on the Sound fishing for tasty favorites like fluke, porgy, black sea bass, striped bass and bluefish.

This NEW interactive application has lots of great information, including maps and links, providing all you need to know about Connecticut's fisheries.

Give it a spin and let us know what you think!



#### ZEBRA MUSSELS REMINDER

**Zebra mussels are now found in a number of locations scattered throughout the Housatonic River and its impoundments including Lake Lillinonah (since 2010), Lake Zoar (since 2010) and Lake Housatonic (since 2011).**

Prior to their discovery in Lakes Lillinonah and Zoar in 2010, zebra mussels had been found (1998) in CT only in East Twin Lake and West Twin Lake (Salisbury). Anglers fishing in any of these waters and western Connecticut in general **should use extra care to avoid transporting water, aquatic vegetation, and possibly zebra mussels to new locations.** Information

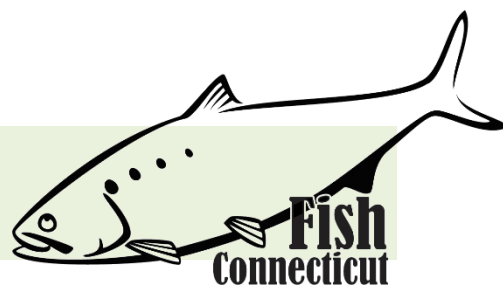
For more information including precautions that should be taken to prevent the spread of zebra mussels to additional waters, visit [www.ct.gov/deep/invasivespecies](http://www.ct.gov/deep/invasivespecies) or the Aquatic Invasive species section of the 2016 CT angler's Guide( [www.ct.gov/deep/anglersguide](http://www.ct.gov/deep/anglersguide)).

#### REMINDER TO ANGLERS- FISHING IN OR CASTING INTO PERMITTED SWIM AREAS IS PROHIBITED.

State regulations prohibit fishing in or into a swim area that's been permitted by DEEP. Additionally, vessels cannot be operated within a permitted swim area, and there's a 100 foot "no-wake" zone around the perimeter. Swim areas that have been permitted by DEEP will be marked by white buoys with orange markings, and there should be a permit number posted on the buoys. They may or may not have small orange barrier floats to further demarcate the area. Should questions arise concerning the validity of the swim area (*no permit numbers or the area appears to have been changed/enlarged or keeps moving*), please contact DEEP's Boating Division at 860-434-8638.



## MARINE FISHING REPORT



Surface water temperatures in Long Island Sound (LIS) continue in the upper 70's °F. Check out the following web sites for more detailed water temperatures and marine boating conditions:

<http://www.mysound.uconn.edu/stationstat.html>

[http://marine.rutgers.edu/mrs/sat\\_data/?nothumbs=1](http://marine.rutgers.edu/mrs/sat_data/?nothumbs=1)

<http://www.ndbc.noaa.gov/>

<http://www.wunderground.com/MAR/AN/330.html>

**Connecticut State Boundary Line in Long Island Sound.** Anglers please note: Though Connecticut has reciprocity with neighboring states (New York, Rhode Island, Maine and Massachusetts), residents of Connecticut are required to have a CT Resident Marine Waters Sport Fishing License to fish in the Marine District.

**WHALES** have been reported in Long Island Sound (in early July, juvenile humpback whales have been spotted on the New York side of the sound), please see check [WHALE WATCHING GUIDELINES](#).

**Note:** All marine mammals are protected by the Federal Marine Mammal Protection Act. Following these recommended operational guidelines helps minimize chances of harassing or injuring whales and violating Federal law. Guidelines apply to all large whales from Maine through Virginia, except North Atlantic right whales. It is illegal to approach a right whale within 500 yards (1500 feet) unless granted specific exemption or authorization.

**SEA TURTLES:** [See a Tangled Turtle? Call the Hotline!](#) 1-860-572-5955 ext. 107. This is the time of year when leatherback, loggerhead, green, and Kemp's ridley sea turtles return to northern waters, with many sightings around Long Island Sound.

---

**ATLANTIC BONITO & LITTLE TUNNY** fishing is sporadic, here today and gone tomorrow is the news. These small tunas are cruising around from Pt. Judith, Watch Hill to Pine Island (including Fishers Island Sound), and the Race to Little Gull Island, from Bartlett Reef to Black Point and west to New Haven. Dawn is the best time to fish for these inshore tunas. Try casting metal (heavy) lures to feeding fish on the surface. A quiet approach and finding birds (gulls/terns) actively feeding is the key to a successful trip.

**STRIPED BASS** fishing remains very good at night. Hook up with a charter boat and learn how to catch those "cow" bass. Live lining bunker (Atlantic menhaden) on the reefs at dawn and dusk still producing some nice bass (50 inches – 54 pounds, (Plum Gut).

The usual striper spots include the Watch Hill reefs, Ram Island Reef in Fishers Island Sound, lower Mystic and Thames River, the Race, Sluiceway, Plum Gut, Pigeon Rip, outer Bartlett Reef, Black Point, the "humps" south of Hatchett Reef, lower Connecticut River, Long Sand Shoal, Cornfield Point, Southwest Reef (outer), Sixmile Reef, Falkner Island area, the reefs off Branford, New Haven Harbor and the upper reaches, Charles Island area, lower Housatonic River, buoys 18 and 20 off Stratford Point, Stratford Shoal/Middle Ground, Penfield Reef, around the Norwalk Islands, and Cable and Anchor Reef.

**SUMMER FLOUNDER** (fluke) fishing is getting better as fall approaches. They are feeding heavily prior to their migration south for the fall/winter. Fishermen are reporting some very large doormat fluke

being caught (12 lbs 8 ozs, central sound). Apparently, the bite is in very shallow water (6 to 25 feet). Hit those beach areas where all the bait is stacked up along the shoreline. Live lining snapper blues in deep water (80 to 100') is the preferred method by fluke sharpies in the fall.

The usual summer flounder spots include the south shore of Fishers Island (Isabella Beach, Wilderness Point), Napatree Point and along the beach, off the Stonington breakwater, mouth of the Mystic River over to Groton Long Point, Twotree Island Channel, Black Point/Niantic Bay including the Bloody Grounds, Sound View Beach, Long Sand Shoal, Falkner Island area, New Haven Harbor, off the mouth of the Housatonic River during the flood tide, and around the Norwalk Islands. **Minimum size is 19 inches and the daily creel limit is 3 fish per person, season closes on September 21, 2017.** [CT Bait & Tackleshop List](#)

**BLACK SEA BASS** fishing has been very consistent in the Sound. The sea bass have just finished spawning and are feeding heavily on crabs and small fish throughout Long Island Sound. Plan a trip on a [party/charter boat](#) trip to fish off Block Island there are many giant-sized sea bass (5-7 lbs) out there. Eastern Sound (Fishers Island to Block Island and northeast of Montauk) anglers are having better success. For those willing to travel, Block Island Sound is the place to be for humpback sea bass. Closer to home, the rocky reefs from Niantic, to Branford (Falkner Island) have been consistent all season. A reminder to all anglers...if you are fishing in water deeper than 100', barotrauma can cause released fish to struggle to make it back to the bottom. A descending device such as the Shelton Fish Descender can help assist the sea bass air bladder to recompress and get safely back down to the depths. See [Fishsmart.org](#) for more information.

**SCUP (porgy)** fishing is good. These "Reef Slammers" are measuring 10-18 inches ("hubcap size") in length being reported at every fishing pier, reef or rock pile in the Sound. Try Gardner's Island, Milford (Charles Island), Montauk and Niantic (Bartletts and Hatchedts Reef). Very good porgy fishing has also been reported at these very accessible shore-fishing locations: Calf Pasture beach, Jennings and Penfield beach, Seaside Park, (Milford), Bradley Point Park (West Haven), New Haven, **Harkness State Park**, Rocky Neck State Park, **Kimberley Reef (Guilford)**, Meigs Point Hammonasset State Park and **Fort Trumbull State Park**. Locate your favorite [Enhanced Shore Fishing Opportunities](#) for these hard fighting and excellent eating "Reef Slammers". These "panfish of the sea" are easily caught on sandworms/cut squid or any other small piece of bait. Contact your [local bait and tackleshop](#) for updated fishing information.

**BLUEFISH** fishing is very good. Large numbers of bluefish found in the lower estuaries and rivers feeding on menhaden. Eastern Sound has seen much better fishing for "alligator-sized" blues (12-18 lbs). Bluefish fishing spots include the reefs off Watch Hill, the Race, Thames River, Sluiceway, Plum Gut, Pigeon Rip, lower Connecticut River, Long Sand Shoal, Sixmile Reef, Falkner Island area, New Haven Harbor and upper reaches, lower Housatonic River, buoys 18 and 20 off Stratford Point, Stratford Shoal/Middleground, Penfield Reef, and Cable and Anchor Reef.

**SNAPPER** Bluefish fishing has improved in the tidal creeks and rivers with fish measuring 6 to 10 inches in length. The **DEEP Marine Headquarters fishing pier** and **Fort Trumbull fishing pier** are two great spots to catch these feisty little fish – your local tackle shop can clue you in to other great spots. Snapper fishing is a fantastic way to introduce kids to saltwater fishing – get those kids out of the house and get a rod in their hands over the long weekend.

**BLACKFISH (TAUTOG) CLOSED until October 10, 2017**

**STRIPED SEAROBIN** fishing continues to be steady for this "hardhead fish with spines and large pectoral fins". Also, called "**Poor-Man's Lobster**", these fish are very common especially when bottom



fishing at many of Connecticut’s shore fishing sites. With fish measuring over 22 inches and “barking up a storm” (grunting noise they make when handling them). They love sandworms, squid and any live or dead bait. They are also very good to eat. There are videos on how to clean/fillet these tasty eating fish.

**HICKORY SHAD** fishing is good in the Black Hall River/Lieutenant River, **Housatonic River** and the lower Connecticut River (DEEP Marine Headquarters fishing pier). Fishing remains good at Fort Trumbull, Black Hall, Clinton Harbor River systems and the lower Connecticut River (DEEP Marine Headquarters fishing pier). Both snappers and hickory shad can be found schooling together at these locations.

**WEAKFISH** fishing is surprisingly good in the central and western Sound. Many scup anglers are catching them. Fish up to 26 inches are being reported in the West Haven beaches and Charles Island area. Also, look for weakfish in Guilford/Madison/New Haven Harbor areas.

**BLUE CRAB** fishing is fair in all tidal creeks and bays. Many of the large Jimmies (male crabs) have moved upstream. Incoming tide has produced better crab fishing as the crabs migrate into the shallow water to feed. **Remember...all egg bearing females must be released without avoidable harm. Minimum carapace length is 5 inches for a hard shell crab.** Legal gear types include: scoop (dip) net, hand line, star crab trap, circular (topless) trap not exceeding 26 inches in diameter. Maryland Style crab traps are prohibited. **Chicken with the skin on it (along with a long handle dip net) and a small circular crab trap is the preferred method to capture these tasty crabs.** [Blue Crab Fact Sheet](#)  
**Angler’s please also note: It is illegal to snag blue crabs.**

**NOTABLE CATCHES –**

Species	Length (in.)	Weight (lb)	Angler
Blue Crab	8”		Ronald Wetmore
Blue Crab	7.5”		Matthew Pasquale
Northern Puffer	10”	C&R	Evan Kamoen
Thresher Shark	81”	278	Steve Danis

**For Current Connecticut Recreational Fishing Regulations:** Anglers should consult the 2017 Connecticut Anglers Guide which is now available at most Town Clerks Offices, DEEP offices and at tackle stores selling fishing licenses. Current regulations, electronic versions of the Angler’s Guide and additional information can all be accessed on the DEEP website at: [www.ct.gov/deep/fishing](http://www.ct.gov/deep/fishing).

The Connecticut Department of Energy and Environmental Protection is an Affirmative Action/Equal Opportunity Employer that is committed to complying with the requirements of the Americans with Disabilities Act. Please contact us at (860) 418-5910 or [deep.accommodations@ct.gov](mailto:deep.accommodations@ct.gov) if you have a disability and need a communication aid or service; have limited proficiency in English and may need information in another language; or if you wish to file an ADA or Title VI discrimination complaint.



**DEEP WEEKLY Fishing Report**  
**Connecticut Department of Energy & Environmental Protection**  
 79 Elm Street, Hartford, CT 06106  
[www.ct.gov/deep/Fisheries](http://www.ct.gov/deep/Fisheries)